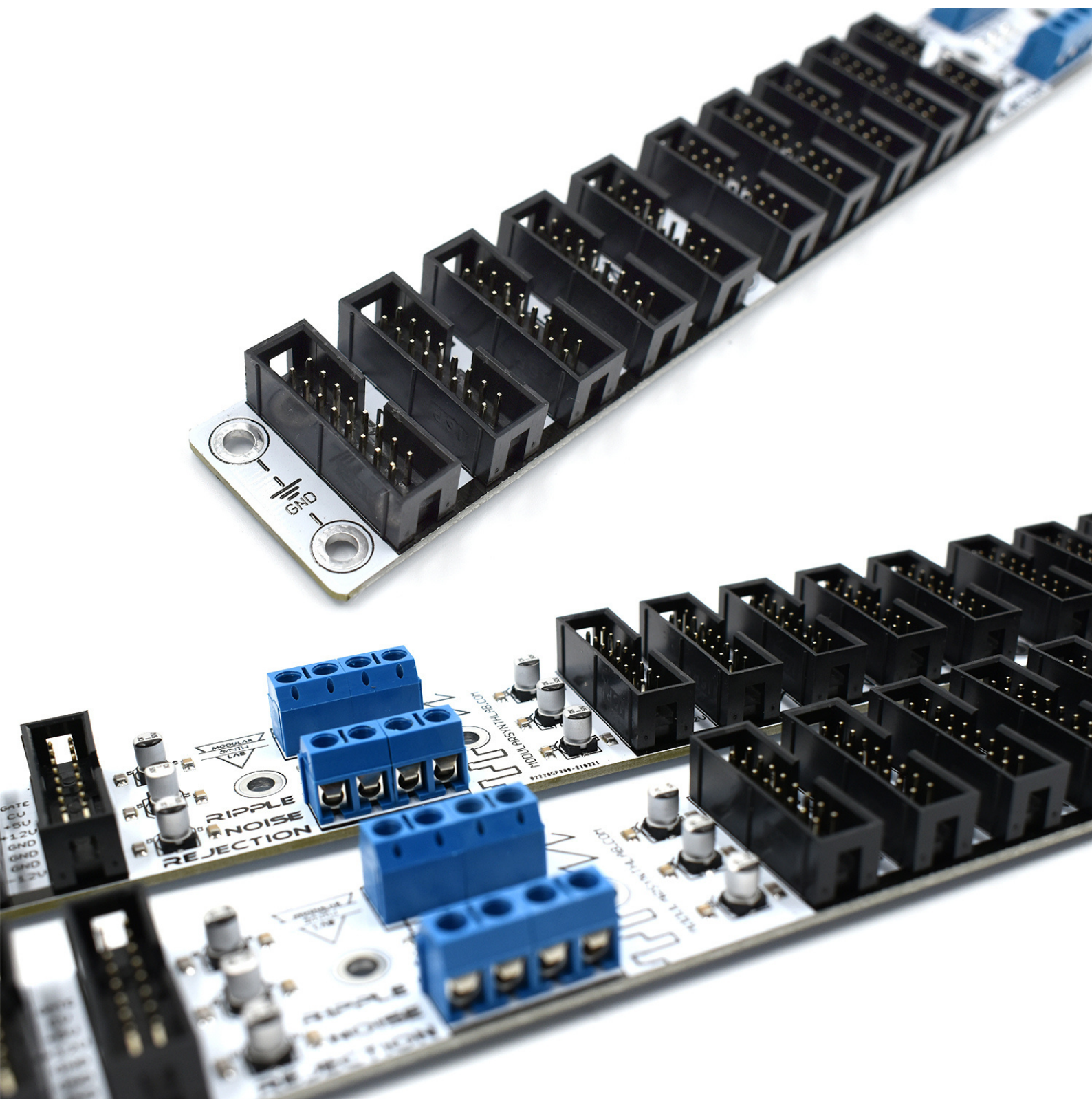
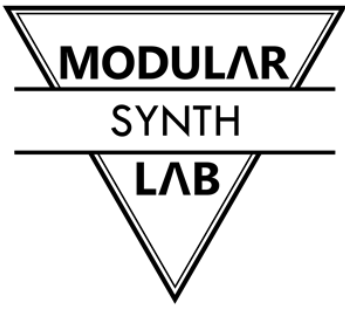


MSL Filter Busboard

www.modularsynthlab.com



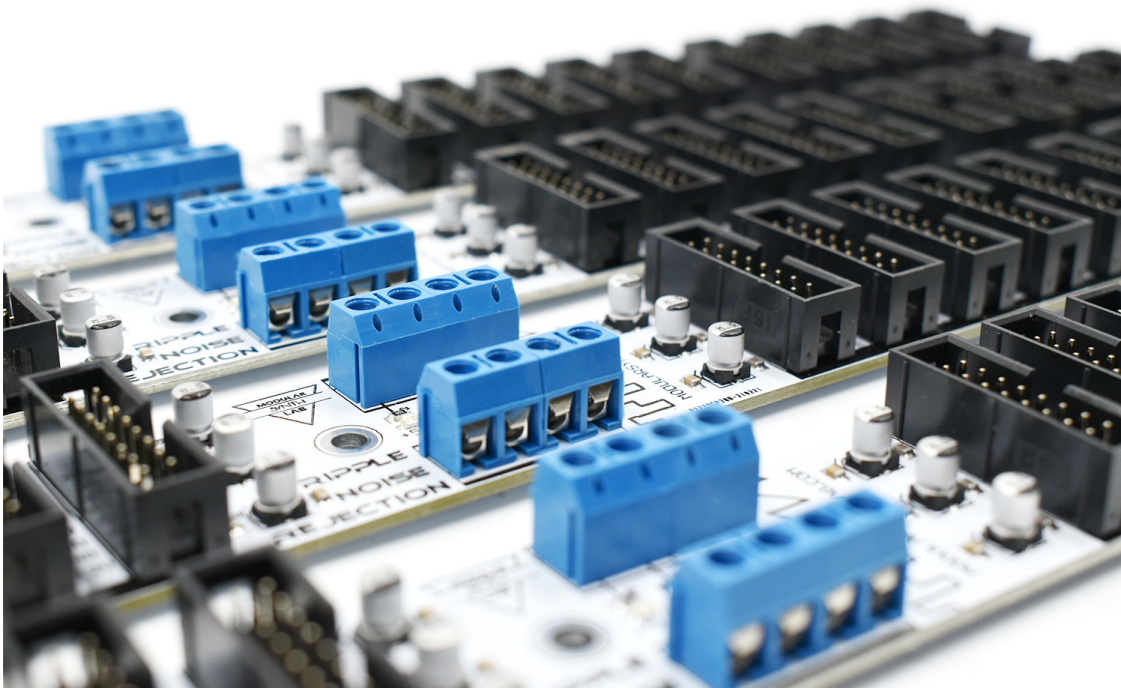


MSL Filter Busboard

www.modularsynthlab.com

Features

- Dimensions: 359mm x 30mm (14.13" x 1.18")
- 2x bypass capacitor bank to attenuate ripple & noise of mid, high and low frequencies
- 20x safety shrouded 16 pin eurorack power connectors
- 2x screw terminals (+12V, -12V, +5V, GND). Any of the terminals can be connected to PSU – the second terminal can be used to chain another busboard
- 4x grounded mounting holes at both ends of the Bus Board for easy case/rails grounding (holes are connected with the GND signal of the busboard)
- Power supply wires screw terminals located in the middle of the bus board to reduce circuit inductance and distribute voltage evenly through the whole board
- 3x LED indicators on every power rail
- "Cut to length" option – cut anywhere between 16 pin connectors to customize bus board length

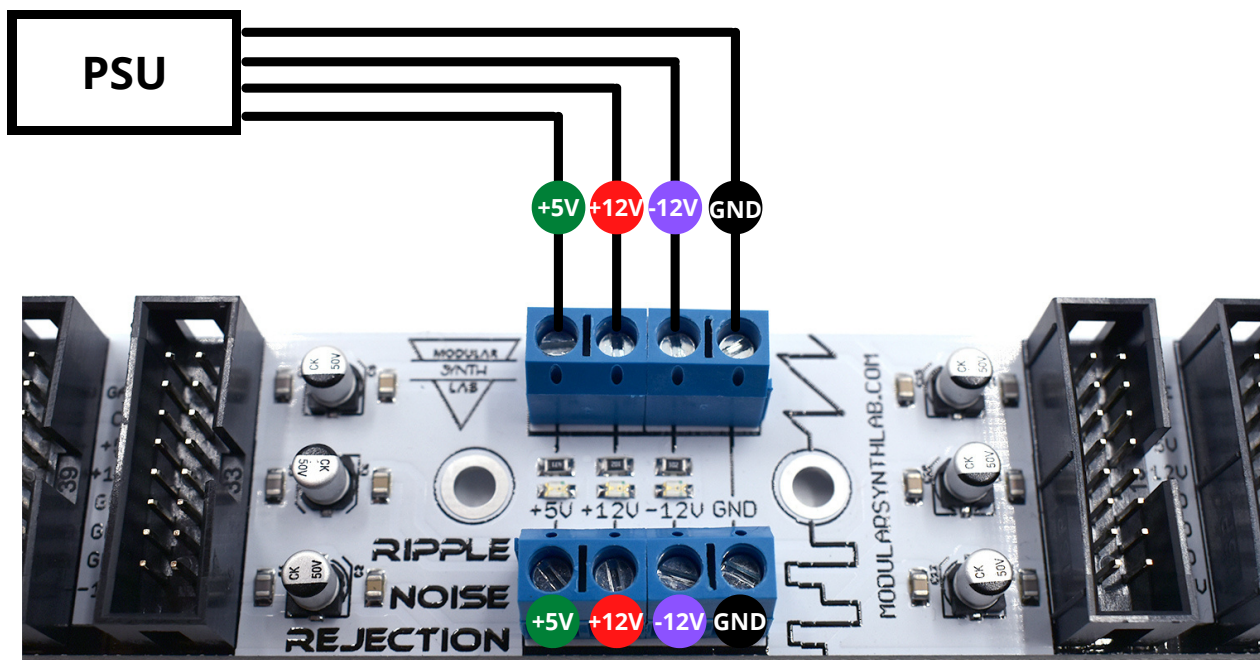


MSL Filter Busboard

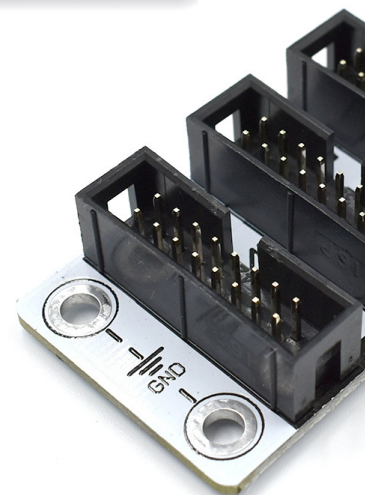
www.modularsynthlab.com

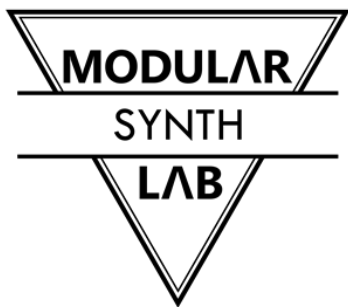
Installation

- To ensure the safe operation of the modules please make sure that you install the busboards according to the below diagram. It is important that each voltage line is connected to the right place in one of the screw terminals.
- Both screw terminals are connected to each other so you can use any of the two, to connect wires from PSU unit.
- The other screw terminal can be used to daisy chain the second busboard. We do not recommend daisy-chaining more than 3 busboards to each other.



- At both ends of the busboard, you will also find two grounded mounting holes. Those ground points can be used in case if you need to ground the busboard to the metal case or if the additional ground wire needs to be routed.
- If your eurorack system uses power supply modules where the voltage is distributed via a 16-pin power cable, you can connect it to one of the sockets close to the middle of the busboard - next to screw terminals.



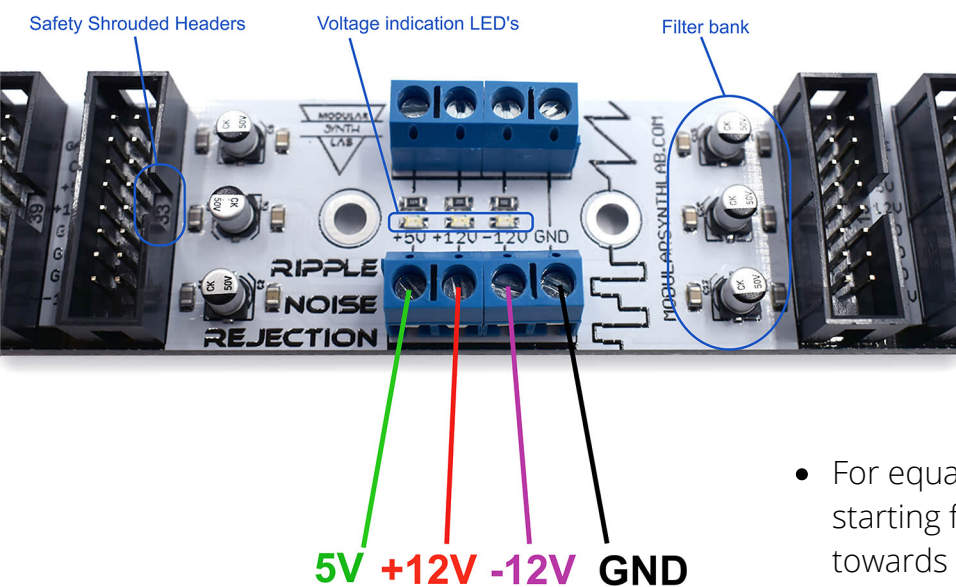


MSL Filter Busboard

www.modularsynthlab.com

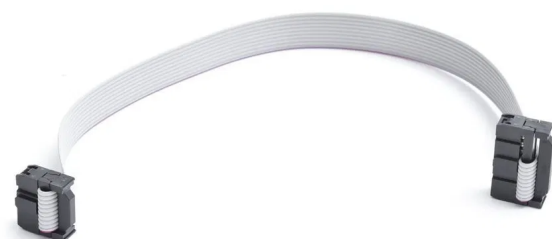
Connecting Eurorack Modules

- You can connect up to 20 eurorack modules directly to one busboard.
- All 16-pin connectors on the busboard are equipped with safety notches to prevent incorrect connection of the power cable.



- Before connecting any modules to the busboard please inspect each connector for signs of any visible damages or bent pins.
- Do not connect any modules if indicator LED's are not lighting.

- For equal voltage distribution, connect modules starting from the middle of the busboard towards the ends.
- To connect modules that use 10-pin connectors, please use 10-16 pin eurorack power adapter cables.

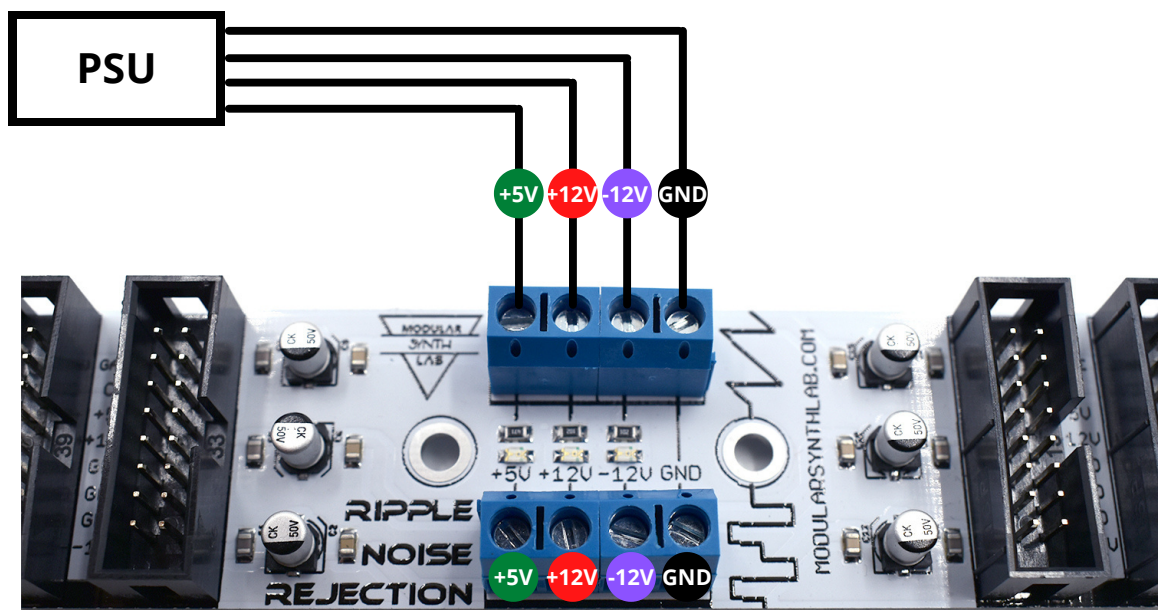




QUICK INSTALLATION GUIDE

Connect Power

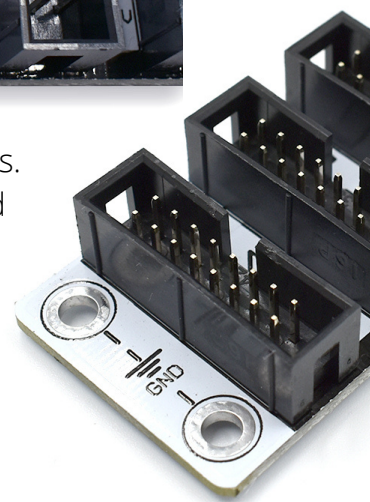
- To ensure the safe operation of the modules please make sure that you install the busboards according to the below diagram. It is important that each voltage line is connected to the right place in one of the screw terminals.
- Both screw terminals are connected to each other so you can use any of the two, to connect wires from PSU unit.
- The other screw terminal can be used to daisy chain the second busboard. We do not recommend daisy-chaining more than 3 busboards to each other.



- At both ends of the busboard, you will also find two grounded mounting holes. Those ground points can be used in case if you need to ground the busboard to the metal case or if the additional ground wire needs to be routed.
- If your eurorack system uses power supply modules where the voltage is distributed via a 16-pin power cable, you can connect it to one of the sockets close to the middle of the busboard - next to screw terminals.

Connect Modules

- You can connect up to 20 eurorack modules directly to one busboard.
- All 16-pin connectors on the busboard are equipped with safety notches to prevent incorrect connection of the power cable.
- For equal voltage distribution, connect modules starting from the middle of the busboard towards the ends.
- To connect modules that use 10-pin connectors please use 10-16 pin eurorack power adapter cables.



The full version of this instruction can be found at:

https://modularsynthlab.com/Download/MSL_Filter_Busboard.pdf



SCAN ME